



WALKING GUIDES

Contents

Baker Street Station Walking Guide	2
Getting to the theatre (via park)	2
Getting to Baker Street Station (after matinee and evening shows)	5
Getting to Baker Street Station (after matinee shows)	9
Euston Station Walking Guide	13
Getting to the theatre	13
Getting to Euston Station	19
Inside the theatre	25

Baker Street Station Walking Guide

Getting to the theatre (via park)



1. Leave Baker Street underground station via Baker Street North Exit.

After tapping out, turn right until you see the Co-Op.



2. Turn right at the Co-Op and follow the passage until you exit the station.



3. Once outside the station, turn right onto Baker Street and continue straight.



4. Continue past the bus stop.



5. At the traffic lights, carefully cross the road onto the island.



6. Carefully cross again at the traffic lights and turn left.



7. Follow the path around, making a big U-shaped turn.



8. Reach the traffic lights on your left. Carefully cross the road.



9. Turn left - you will see the gates to Regent's Park on your right. Continue through the gates.



10. At the Boating Lake, turn right - you will see a bridge ahead on your left.



11. Cross the bridge.



12. Once across the bridge, turn left and follow the path.



13. At the end of the path, you'll arrive at an open gate with a refreshment kiosk on the right.



14. Walk through the gates onto the Inner Circle. Carefully cross the road. Watch out for cyclists.



15. Continue past the Regent's Bar & Kitchen on your left.



16. At the end of the path, turn left and continue along the path. Keep going. Don't worry if you don't arrive at the theatre right away - it's well hidden amongst the trees.



17. When you find the Box Office, you've arrived. Please join the queue. Staff will be ready to take your tickets and check your bags before your performance.

Getting to Baker Street Station (after matinee and evening shows)

Please note that after evening performances, this is the only route to Baker Street Tube Station as the Regent's Park gates will be closed and locked after sunset.



1. It may be busy as people leave the auditorium. If you'd like to, you can wait in your seat and leave when it's a bit quieter.



2. After exiting via the Gangways, turn right to reach the Theatre Exit Gate.



3. Move away from the Bar towards the Lawn.



4. Pass the Toilet entrance on your left and the lawn on your right.



5. Keep going towards the Exit Gate.



6. Continue through the gate onto the Inner Circle and turn left to follow the road.



7. Keep heading along the Inner Circle, past the gardens.



8. Head past the wrought iron gates - you're still on the Inner Circle.



9. Head down York Bridge



10. There is a slight incline when you cross the bridge, and then a decline after.



11. Continue straight down York Bridge.



12. At the traffic lights, carefully cross the road.



13. Keep heading straight until you reach the busy road ahead - Marylebone Road. Then turn right.



14. Continue along the road towards Madame Tussauds



15. Continue past Madame Tussauds.



16. Carefully cross the road at Allsop Place. [You'll need to move across to the right hand side of the divide in the road (as indicated by the arrow above).]



17. Up ahead you'll see Baker Street Underground Station



18. The first entrance into the station on your right serves the Circle, Metropolitan, and Hammersmith and City lines.



19. The second entrance to the station on your right serves the Bakerloo and Jubilee Lines.

Getting to Baker Street Station (after matinee shows)



1. It may be busy as people leave the auditorium. If you'd like to, you can wait in your seat and leave when it's a bit quieter.



2. After exiting via the Gangways, turn right to reach the Theatre Exit Gate.



3. Move away from the Bar towards the Lawn.



4. Pass the Toilet entrance on your left and the lawn on your right.



5. Keep going towards the Exit Gate.



6. Turn left onto the Inner Circle and follow the road.



7. You will walk past the other side of the Regent's Bar & Kitchen.



8. You will see a set of gates both on your left as well as across the road on your right.



9. Carefully cross the road and pass through the gates on your right.



10. Follow the path down to the boating lake



11. Continue down the path until you see a bridge to your right



12. Cross the bridge



13. Once across the bridge, turn right and continue along the path towards the Regent's Park gates.



14. The Regent's Park gates are on the left. Turn left and continue towards it.



15. When you exit the gates, turn left towards the traffic lights.



16. Carefully cross the road at the traffic lights.



17. Once across, turn right and follow the bend in the path.



18. You will reach another set of traffic lights.



19. Careful cross to the island in the middle, then cross again.



20. Continue straight along the path, past the bus stop.



21. Turn left to enter Baker Street Tube station and follow along the passageway.



22. The first set of gates lead to Bakerloo and Jubilee lines.



23. For Circle, Metropolitan, and Hammersmith and City lines, walk straight past the first set of gates until you reach a flight of stairs. Go down the flight of stairs for the gates into the Circle, Metropolitan, and Hammersmith and City lines.

Euston Station Walking Guide

Getting to the theatre



1. If arriving via Tube, take the lift up to street level, after tapping out. If arriving via Overground services or the Lionness line, tap out into the entrance hall and head towards the exit on your right.



2. From outside the lifts, head towards the Sainsbury's and go past it.



3. Take the ramp down to ground level.



4. Follow the temporary path down Melton Street.



5. At the end of the path, turn right onto Euston Road and continue along the pavement.



6. You will pass an entrance into Euston Square Station on your right.



7. Continue along Euston Road and cross at North Gower Street. There are no traffic lights at this crossing, so please be aware of vehicles and cyclists.



8. Continue straight along Euston Road.



9. When you reach the crossing at Hampstead Road, carefully cross at the traffic lights.



10. Warren Street Tube station will be on your left and Euston Tower and Regent's Place Plaza on your right. Continue straight along Euston Road.



11. You will pass some food shops on your right.



12. When you reach the crossing at Osnaburgh Street, carefully cross at the traffic lights.



13. Great Portland Street Tube station will be on your left. Continue along the road, which is now Marylebone Road.



14. When you reach the crossing at Albany Street, carefully cross at the traffic lights. Continue along Marylebone Road.



15. Cross at Park Square East. There are no traffic lights at this crossing, so please be aware of vehicles and cyclists. Continue along Marylebone Road.



16. Cross at Park Square West. There are no traffic lights at this crossing, so please be aware of vehicles and cyclists.



17. At Ulster Place, continue along the pedestrian path, keeping Marylebone Road on your left.



18. You will pass the Harley Street Bus Stop M.



19. If you are travelling on bus numbers 18 and 205 from Euston Station, get off at the corresponding bus stop on the opposite side of the road. Alight, cross the road at the traffic lights farther down the street, and join us on this side of the road.



20. For people taking the bus from Euston Station, this is the crossing where you will join our journey to the Open Air Theatre!



21. Continue down Marylebone Road. You will pass the Royal Academy of Music on your right.



22. Cross at York Gate. There are no traffic lights at this crossing, so please be aware of vehicles.



23. Turn right onto York Gate



24. Cross at the traffic lights



25. Continue along York Bridge. There is a slight incline when crossing over the bridge, and then a slight decline.



26. Continue along the path



27. Cross the Inner Circle at the large gates - look out for cyclists and vehicles.



28. Turn left onto the Inner Circle and continue along the path.



29. Turn right and pass the Regent's Bar and Kitchen on your left.



30. Follow the Open Air Theatre signs at the end of the path. Turn left and continue along the path.



31. Keep going. Don't worry if you don't see the theatre right away - when the foliage is thick, the theatre is well hidden amongst the trees.



32. You will soon see our box office on the left.

Getting to Euston Station



1. It may be busy as people leave the auditorium. If you'd like to, you can wait in your seat and leave when it's a bit quieter.



2. After exiting via the Gangways, turn right to reach the Theatre Exit Gate.



3. Move away from the Bar towards the Lawn.



4. Pass the Toilet entrance on your left and the lawn on your right.



5. Keep going towards the Exit Gate.



6. Turn left and follow the road.



7. You will walk past the other side of the Regent's Bar & Kitchen.



8. Keep walking along the road past the gardens.



9. Cross the Inner Circle at the large gates - look out for cyclists and vehicles.



10. Head down York Bridge.



11. There is a slight incline when crossing over the bridge, and then a slight decline.



12. Cross at the traffic lights.



13. Continue along York Gate.



14. Turn left onto Marylebone Road.



15. Cross at the crossing. There are no traffic lights at this crossing, so please be aware of vehicles and cyclists.



16. Continue down Marylebone Road. You will pass the Royal Academy of Music on your left.



17. You will pass the Harley Street Bus Stop M. You can take buses 18 and 205 to Euston Station from this bus stop.



18. Continue down Marylebone Road. At Ulster Place, continue along the pedestrian path, keeping Marylebone Road on your right.



19. Cross at Park Square West. There are no traffic lights at this crossing, so please be aware of cyclists and vehicles.



20. Continue along Marylebone Road. Cross at Park Square East. There are no traffic lights at this crossing, so please be aware of vehicles and cyclists.



21. Continue along Marylebone Road. When you reach the crossing at Albany Street, carefully cross at the traffic lights.



22. Continue along the road, which is now Euston Road. Great Portland Street Tube station will be on your right.



23. When you reach the crossing at Osnaburgh Street, carefully at the traffic lights cross. Continue straight along Euston Road



24. Euston Tower and Regent's Place Plaza will be on your left, and Warren Street Station on your right. When you reach the crossing at Hampstead Road, carefully cross at the traffic lights.



25. Continue straight along Euston Road.



26. Continue along Euston Road and cross at North Gower Street. There are no traffic lights at this crossing, so please be aware of cyclists and vehicles.



27. You will pass an entrance into Euston Square Station on your left. Continue along Euston Road.



28. Turn left onto Melton Street and follow the temporary path.



29. Take the ramp up to the station level.



30. Head past the Cafe Nero and Sainsbury's to enter Euston Station.



31. For the Tube, take the elevator down to access the Northern and Victoria Lines.



32. For Overground and Lionness lines, head into the entrance hall.

Inside the theatre



1. Scan your tickets and enter the theatre through our Box Office



2. For Covered Dining, turn right and approach one of our staff members to check in for your booking.



3. Otherwise, turn left and head down the path.



4. At the bend in the path, there is a bike rack and a water refill station.



5. At the end of the path, you will find yourself in front of Gangway 4.



6. On the left, there is the Picnic Lawn, The Grill and the Merchandise Cart



7. Toilets are immediately to the left.



8. For more food and dining options as well as entrance to the theatre via gangways 1 to 3, turn right.



9. To the immediate right of Gangway 4 is the Open Air Cafe and Gangway 3.



10. Head further right down the path for the Bar.



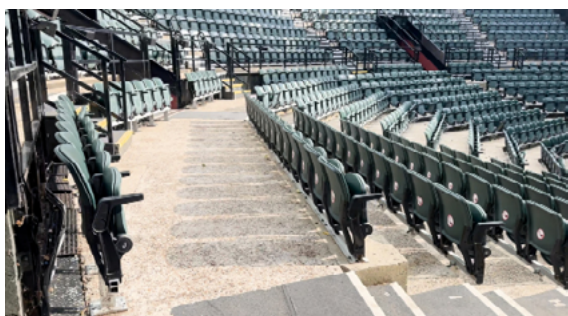
11. When you pass the Bar, you will arrive at Gangway 2.



12. The Pizza Collection point is also beside Gangway 2.



13. Head further right down the path for Gangway 1



14. Enter the theatre via the Gangway listed on your ticket. Row J are step-free seats on ground level – these seats can also be removed to make room for mobility aids.