

REGENT'S PARK
OPEN
AIR THEATRE

ONCE ON THIS **ISLAND**
A MUSICAL

17 Jun – 22 Jul

REGENT'S PARK
**OPEN
AIR** THEATRE

ROBIN HOOD THE LEGEND. RE-WRITTEN.

by **CARL GROSE**

openairtheatre.com

WELCOME

Welcome to Regent's Park Open Air Theatre and this performance of *Once On This Island*, the first production in our 2023 season.

We are delighted to be giving this Tony and Olivier Award-winning story of love, grief, faith and hope its second major UK revival since its West End premiere in 1994, and thrilled to be welcoming the work of Lynn Ahrens and Stephen Flaherty back to the stage of Regent's Park Open Air Theatre following our 2012 revival of *Ragtime*. We have been working with a wonderful team of dedicated theatre makers, performers, stage managers and staff on this ambitious revival that speaks to our times, led by Ola Ince who was last at the Open Air Theatre as Assistant Director on *Porgy and Bess* in 2014. We really do hope you enjoy the show.

This year we're bringing you a bumper season at Regent's Park, with the world premiere of Carl Grose's *Robin Hood: The Legend. Rewritten.* following *Once On This Island*, before the season closes with a revival of *La Cage aux Folles*. For the first time, productions for children and families run during the daytime throughout the entirety of the season, with the world premiere of Chinonyerem Odimba's adaptation of Ben Okri's *Every Leaf A Hallelujah*, William Shakespeare's *The Tempest* re-imagined for everyone aged six and over in a co-production with the Unicorn Theatre, and Nicoll Entertainment's *Dinosaur World Live*. Our Sunday evening MOREoutdoor offer continues with one-off gigs from the likes of the **BBC Big Band, Bridget Christie, Tim Key, Sara Pascoe** and more, as well as screenings of *Elvis* and *Grease* by The Luna Cinema.

We would like to take this moment to gratefully acknowledge our partners, stakeholders, advisors and donors for their much-valued ongoing support, loyalty and contributions.

We're incredibly excited to have you back at the Open Air Theatre this summer as we continue to celebrate the power and magic of telling stories under a shared sky.

Tim Sheader
Artistic Director

James Pidgeon
Executive Director

29 Jul – 16 Sep

REGENT'S PARK
OPEN AIR THEATRE

LA CAGE AUX FOLLES

book by **HARVEY FIERSTEIN**
music & lyrics by **JERRY HERMAN**
based on the play by **JEAN POIRET**

openairtheatre.com

FAMILY FUN AT REGENT'S PARK OPEN AIR THEATRE

22 May – 10 Jun

EVERY LEAF A HALLELUJAH

by **BEN OKRI** adapted by **CHINONYEREM ODIMBA**

for ages 4+ | daytime performances

Regent's Park Open Air Theatre and Unicorn Theatre present

30 Jun – 22 Jul

THE TEMPEST

RE-IMAGINED FOR EVERYONE AGED SIX AND OVER

by **WILLIAM SHAKESPEARE**

UNICORN

for ages 6+ | daytime performances

REGENT'S PARK
OPEN AIR THEATRE

11 Aug – 3 Sep

DINOSAUR WORLD LIVE

for ages 3+ | daytime performances

For tickets openairtheatre.com

MORE outdoor

*all ticket prices include a £1.80 per ticket booking fee. No booking fee when purchased in person from the box office.

SHOW AND TELL PRESENTS

ALISTAIR GREEN: WHAT ARE WE LIKE EH!

Sun 28 May, 8.45pm
All tickets £25*



PLOSIVE LIVE IN ASSOCIATION WITH PBJ MANAGEMENT PRESENTS

TIM KEY: MULBERRY

Sun 4 Jun, 8.30pm
All tickets £25*



SHOW AND TELL PRESENTS

BRIDGET CHRISTIE & FRIENDS

Sun 9 Jul, 7.45pm
All tickets £25*



SHOW AND TELL PRESENTS

AUSTENTATIOUS: AN IMPROVISED JANE AUSTEN NOVEL

Sun 16 Jul, 7.45pm
All tickets £25*



SHOW AND TELL IN ASSOCIATION WITH DAWN SEDGWICK MANAGEMENT PRESENTS

SARA PASCOE: SUCCESS STORY

Sun 13 Aug, 7.45pm
All tickets £20*



THE LUNA CINEMA PRESENTS

ELVIS (12A)

Sun 20 Aug, 8.25pm
Tickets £18* | £21.50*
VIP tickets £30*



THE BBC BIG BAND: SUMMER SWING

Sun 3 Sep, 7.45pm



THE LUNA CINEMA PRESENTS

GREASE (PG)

Sun 10 Sep, 7.40pm
Tickets £18* | £21.50*
VIP tickets £30*



FROM THE BAR

SUMMER SPRITZES £9.95

English Amber Spritz

Winner of the World's Best Vermouth 2019, this is a sophisticated take on a classic, served with ice, prosecco and a slice of orange.

Rosehip Spritz

Hitting the mid-point between the bitterness of Aperol & Campari, Sacred's Rosehip Cup blends with prosecco and soda for a refreshingly adult aperitif.

Pomme Spritz

Double Jus apple & calvados liqueur with ginger beer, like a sparkling tarte tatin.



ONCE ON THIS ISLAND COCKTAIL SPECIALS

Honey Rum Punch £10.95

Honey rum, orange juice, pineapple juice, grenadine with a fresh orange slice.

Mango Bellini £12.95

Mango puree topped with Canard-Duchêne champagne.

Can be made with non-alcoholic prosecco for £6.95.



CRAFT BEERS

We have partnered with Hackney Brewery to create an

Open Air Pale Ale

on draft, served alongside an extensive range of craft beers from

Camden Town, Deya, Lucky Saint and Beavertown breweries.



GO LOW or NO

With more options on offer than ever before, take a look at our selection of low or non-alcoholic drinks:

Lucky Saint , 0.5%	330ml	£4.15
Beavertown Lazercrush IPA , 0%	330ml	£4.70
Scavi & Ray Prosecco , 0%	70cl	£22.50
Mango Bellini , 0.5% (with non-alcoholic prosecco)		£6.95

INTRODUCTION TO HAITIAN VODOU

Dr Kyrach Malika Daniels

Dr Kyrach Malika Daniels is an Assistant Professor of African American Studies at Emory University.

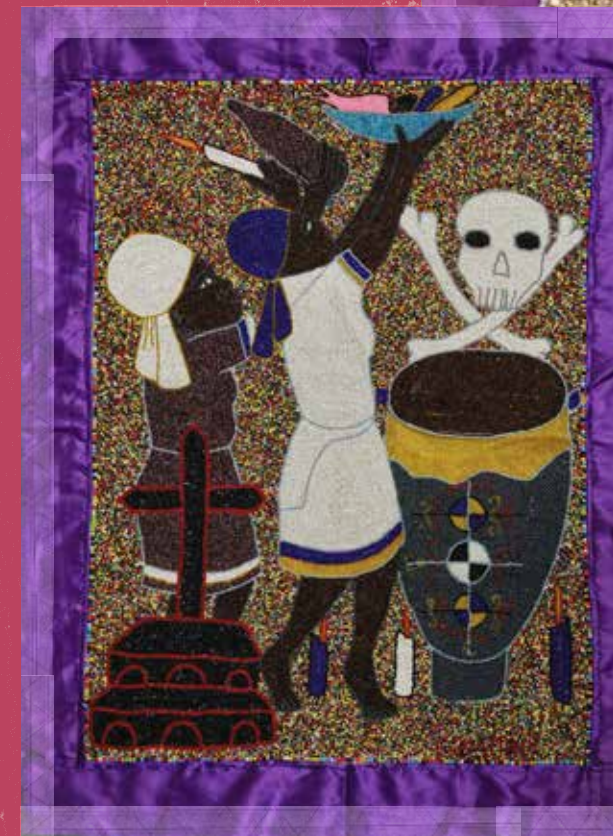
Haitian Vodou is an African Diaspora religion and ancestral tradition grounded in tenets of sacred healing to maintain balance and rhythm within the cosmos.

Vodou emerged from the religious collisions and cohesions between West African spiritual traditions of Fon and Dahomean peoples of Togo and Benin, Nàgó peoples of southwestern Nigeria and Benin, Kongo peoples from Angola, Republic of the Congo, and Democratic Republic of the Congo, Taíno and Arawak peoples of the Caribbean (the original inhabitants of Hispaniola), and French Catholics and European mystics. The Vodou pantheon of spirits exists as a complex matrix, with BonDyè serving as the high God and creator. BonDyè leaves much of human affairs to spiritual

intermediaries, known in Haiti as the lwa (spirits, singular and plural). Haitian ancestors (Haitian Kreyòl, zansèt) serve as interlocutors between mortal and spirit realms, and act on behalf of their family in the living world. These family members tend to ancestors and spirits, sustaining the divinities with song and dance, and nourishing them in ritual ceremonies.

The Haitian Vodou pantheon includes four hundred and one lwa, each of whom presides over various aspects of life. This includes Legba as keeper of the celestial gates; Agwe as captain of the seas and his wife LaSirènn as mermaid queen of the sea; Èzili Freda as spirit of love, wealth, and

abundance; Kouzèn Zaka as spirit of agriculture and the harvest and his wife Kouzin the goddess of commerce and the marketplace; Èzili Dantò as fierce mother warrior; and Papa Gede and Grann Brijit, king and queen of the dead who govern over life, death, and rebirth. The spirits belong to one of several spiritual nations – such as Rada, Nago, Petwò, and Gede – each with their distinct qualities and musical rhythms in ceremony. Haitian Vodouizan (devotees of Vodou) honor the spirits and the ancestors in ritual ceremonies filled with song and dance as a way to honor their African heritage and their diasporic transformations in the Americas.



Images: *Beyond Death: Beliefs, Practice and Material Expression* – Patrick Ryan Williams, Gary M. Feinman and Luis Murn Ynoñán

COMPANY



STEPHENSON ARDERN-SODJE

STEPHENSON ARDERN-SODJE Daniel

Theatre includes: *The Lion King* (UK and Ireland Tour); *The Tempest*, *As You Like It*, *A Midsummer Night's Dream* (Globe); *Hamilton* (Victoria Palace); *Elegies for Angels*, *Punks and Raging Queens*, *Who's Afraid of Virginia Woolf?*, *Hard Times*, *Letters from Home* (Royal Academy of Music); *A West End Christmas* (MAD Trust).

Television includes: *Breeders* (Sky); *Mood* (BBC).

Stephenson hosts the podcast *Generation Vex* (Green Door Pictures) which explores and celebrate writers of colour. He is also a keen writer and is currently working on a couple of his own projects.



BERNADETTE BANGURA

BERNADETTE BANGURA Ensemble / Cover Erzulie

Training: Guildford School of Acting.

Theatre includes: *My Fair Lady* (London Colosseum/UK Tour); *Hairspray* (UK Tour); *Sunset Boulevard* (UK Tour); *Jesus Christ Superstar* (The Barbican); *Aladdin* (Harlow Playhouse); *Robin Hood and Robin Red Breast* (Salisbury Playhouse); *Ragtime* (Charing Cross Theatre); *The Colour Purple* (Cadogan Hall), *The Frogs* (Jermyn Street Theatre); *Ghost*, *Honk*, *Our House*, *Titanic: The Musical* and *Pygmalion* (Guildford School of Acting).

Television includes: *All Together Now*

Other credits include: Sam Bailey In Concert and Josh Groban's Stages.



COURTNEY-MAE BRIGGS

COURTNEY-MAE BRIGGS Andrea

Training: Arts Educational School.

Theatre includes: *Back to the Future* (Adelphi); *Hamilton* (Victoria Palace); *Strictly Ballroom* (Princess of Wales/West Yorkshire Playhouse); *In the Heights* (Kings' Cross Theatre/Southwark Playhouse); *Barnum* (UK Tour); *Kiss Me Kate* (BBC Proms); *Peter Pan* (Sunderland Empire); *Kerry Ellis Live* (London Palladium).

Workshops include: *A Grand Don't Come For Free*; *& Juliet*; *42 Balloons*; *You, Me and The Rest of The World*; *Wind in The Willows*.

Television includes: *Captain Laserhawk* (Netflix); *Royal Variety Performance* (ITV); *Children In Need* (BBC).

GABRIELLE BROOKS Ti Moune

Training: Liverpool Institute for Performing Arts.

For Regent's Park: *A Midsummer Night's Dream*

Theatre includes: *Get Up Stand Up! The Bob Marley Musical* (Lyric); *J'Ouvert* (Harold Pinter); *Anna Bella Eema* (Arcola); *Our Lady of Kibeho* (Royal & Derngate); *Twelfth Night* (Young Vic); *The Way of The World* (Donmar); *The Wizard of Oz*, *Everybody's Talking About Jamie* (Sheffield Theatres); *Queen Anne* (RSC/Theatre Royal Haymarket); *Lazarus* (King's Cross Theatre); *Synergy Play* (Theatre 503); *The Strangers Case* (Liverpool Everyman); *The Book of Mormon* (Prince of Wales); *Our House* (Savoy); *Hairspray* (Stage Entertainment); *Avenue Q* (Cameron Mackintosh).

Television includes: *Shadow and Bone* (Netflix); *J'Ouvert* (BBC Four); *Coming Down The Mountain*, *Grange Hill* (BBC).

Film includes: *Notes on A Scandal*.



GABRIELLE BROOKS

HANNA DIMTSU Swing / Dance Captain

Training: Boyblue Entertainment; IMD Legion.

Theatre includes: *Mandela* (Young Vic); *Hex* (The National Theatre); *Blak Whyte Gray* (Teatros del CANAL); *Breaking Convention* (Saddler's Wells); *A Night With Boyblue* (Barbican Theatre).

Television includes: *Mood* (BBC).

JONATHON GRANT Armand / Cover Agwe

Training: Columbia University, City of New York.

Theatre includes: *Fosse* (US National Tour); *Oklahoma!* (1st US National Tour); *West Side Story* (Musical Theatre West); *Aida* (The Actor's Playhouse); *Carousel* (Reagle Players); *Ragtime* (The Bridewell); *Rent* (Hudson Theatres LA); *Singing in the Rain* (Hale Centre Theatre); *Grease* (Vandivort Centre); *Fiddler on the Roof*, *South Pacific*, *The Who's Tommy* (Springfield Little Theatre); *Broadway Bares* (BC/EFA).

Television includes: *All My Children*, *General Hospital* (ABC Studios); *Days of Our Lives*, *Smash* (NBC Studios); *Gossip Girl* (The CW Network); *Glee* (Fox).

EMILIE LOUISE ISRAEL Erzulie

Training: Arts Educational School.

Theatre includes: *Treason* (Theatre Royal Drury Lane); *Hamilton* (Victoria Palace); *Lion King – Rhythm of The Pride Lands* (Disneyland Paris); *Gobsmacked* (US Tour).

Television includes: *Nickelodeon Crunch Summer Sizzle* (Nickelodeon).

CHRIS JARMAN Tonton Julian

Theatre includes: *Wicked The Musical* (London Victoria Apollo); *Harry Potter and The Cursed Child* (Palace); *Christmas at the Snow Globe* (Globe); *The Book of Mormon* (Prince of Wales Theatre); *Comedy of*

Errors (National Theatre); *Sister Act the Musical* (Stage Entertainment); *The Lion King* (Lyceum); *Gone with the Wind* (New London Theatre); *The Tempest*; *Julius Caesar*; *Antony and Cleopatra*; *The Merchant of Venice* (RSC).

Television includes: *Maternal* (ITV); *House of Dragon* (HBO); *The Witcher: Blood Origin* (Netflix); *Dodger* (BBC); *Foundation* (Apple TV+); *Thunderbirds Are Go* (ITV); *Run* (Channel 4); *Dr. Who* (BBC); *Demons* (ITV1); *Sand Serpents* (Sonar Entertainment); *The Bill* (Talkback Thames); *Holby City* (BBC); *Spartacus* (USA Network).

Film includes: *Jingle Jangle: A Christmas Journey* (10 NAACP Image Awards Nominations); *Lady of Heaven*; *Johnny English Reborn*.

ANELISA LAMOLA Asaka

Training: London College of Music; Mountview Academy of Theatre Arts.

Theatre includes: *The Color Purple* (Curve Leicester/Birmingham Hippodrome UK Tour); *Strictly Come Dancing*, *Some Like It Hip Hop* (Peacock Theatre/UK Tour); *The Wiz* (Hopemill Theatre); *Sunset Boulevard* (Alexandra Palace Theatre); *The Color Purple Concert* (Online Streaming The Curve Leicester); *Aladdin* (Theatre Severn); *The Lion King* (Disneyland Paris).

Television includes: *The Legends of Rugby Dinner 2023*, *BBC Radio 1 Big Weekend of Dance*, *Some Like It Hip Hop*, *Children in Need – Adrian Lester & The Beatbox Collective*, *BBC RADIO 1 Ibiza Live*, *Later with Jools Holland*, *Comic Relief* (BBC); *Rugby World Cup 2018 Japan* (ITV Worldwide).

Recordings include: *Can't Stop Now* (Mistalam ft Anelisa Lamola); *We Rise* (Anelisa Lamola & Carly Wilford); *Come Together* (Franky Wah x Anelisa Lamola).



HANNA DIMTSU



JONATHON GRANT



EMILIE LOUISE ISRAEL



CHRIS JARMAN



ANELISA LAMOLA



CASSANDRA LEE

CASSANDRA LEE
Ensemble / Cover Mama & Asaka

Training: Urdang Academy of Performing Arts.

Theatre credits include: *& Juliet* (West End); *SIX The Musical* (UK Tour); *Peter Pan* (Venue Cymru); *Glaze* (Bunker); *Zulu Sundance* (NEC, Birmingham); *Avenue Q* (The Gatehouse); *Hair* (European Tour).

Television includes: *Eastenders* (BBC); *Autopsy: The Last Hours of Florence Ballard* (ITV/Reelz); *The Eejits* (Channel 4); *My Life as a Popat* (CITV).

Short film includes: *The Final Moments of Poe and Nina*.

Commercial credits include: *ZenAuto*, *Badoo*, *Theraflu* (US) and *FemFresh*.



NATASHA MAGIGI

NATASHA MAGIGI
Mama Euralie

Natasha is nominated for Best Supporting Actress in the 2023 WhatsOnStage Awards.

For Regent's Park: *To Kill a Mockingbird* (2013).

Theatre includes: *A Christmas Carol* (Rose Theatre, Kingston); *The Clothes They Stood Up In* (Nottingham Playhouse); *The Incident Room* (New Dioarma Theatre); *Pericles/Twelfth Night, Comedy of Errors, Comus, Twelfth Night, Much Ado About Nothing* (Globe); *Don Quixote* (RSC); *The Country Wife* (Chichester Festival Theatre); *Lady Windermere's Fan* (Classic Spring); *Twistov* (Teatro Vivo); *Operation Black Antler* (Hydrocracker/Blast Theory/HOME, Manchester); *A Streetcar Named Desire* (Curve, Leicester); *Redefining Juliet* (Barbican); *Monument for A Witness* (London Theatre of Imagination).

Television includes: *The Chelsea Detective* (Acorn TV); *Changing Ends* (BabyCow); *Disclaimer* (Apple TV); *Dodger* (CBBC); *Anatomy of a Scandal* (Netflix); *Double Trouble* (ITV); *Roadkill* (BBC); *The Lowdown* (Channel 4); *Redefining Juliet*



NEWTION MATTHEWS

(BBC Four); *Channel 4 Mash Ups* (Channel 4); *Doctors* (BBC); *A Name Written in Water – Afterlife* (Quite Scary); *Casualty* (BBC).

NEWTION MATTHEWS
Ensemble / Cover Tonton & Papa Ge

Training: WAC Performing arts.

Theatre includes: *Been So Long* (The Young Vic); *The Frontline* (Globe); *The Harder They Come* (North U.S Tour); *The Life* (The English Theatre - Frankfurt); *One Love* (The Birmingham Rep); *Dancing in Streets* (U.K Tour); *Black Power Desk* (The Old Vic); *Brooklyn* (Broadway HD); *Eve & Cain* (Graeae); *Black Power Desk* (Beam Showcase); *Camelot in Concert* (The Palladium); *Get Up Stand Up* (Lyric Theatre, London); *Eve & Cain* (Queens Theatre).

Television includes: *The Royal Variety* (ITV, BBC); *French and Saunders*, *The Voice*, *Songs of Praise*, *Small Axe* (BBC); *X Factor* (ITV).

Film includes: *Gulliver's Travels*; *Zebedy's Cult*; *People We Love to Hate at the Wedding*.

Newtion's debut singles and music video for *PsychoPath* and *Everything & Nothing* off his upcoming EP: *The Father, The Son & The Holy Black* are available for streaming on all platforms now.

ANTOINE MURRAY
Ensemble / Cover Daniel & Armand

Theatre includes: *Sylvia* (Old Vic); *South Pacific* (Sadler's Wells/UK Tour); *& Juliet* (Shaftesbury Theatre); *Madagascar The Musical* (UK Tour); *The Lion King* (Lyceum); *In The Heights* (King's Cross Theatre); *Cats* (London Palladium); *Jesus Christ Superstar* (International Tour); *Breaking Convention* (Sadler's Wells).

Workshops include: *& Juliet*; *Warhol The Andy Warhol Musical*

Film include: *Brothers*; *Roald Dahl's The Witches*.

Commercials include: *Reece's Pieces*.



ANTOINE MURRAY

NAY-NAY
Swing

Training: Laine Theatre Arts.

Theatre includes: *Snow White and The Seven Dwarfs* (New Theatre Cardiff); *Beauty and The Beast* (Civic Theatre).

Television includes: *Games of Talent* (ITV), *Comedy Gala* (O2 Arena - Channel 4), *Passing* (HSBC Advert).

CHERECE RICHARDS
Ensemble / Cover Ti Moune

Training: Italia Conti (BA Hons).

Recordings include: *Blue Skies* (Cherece Richards)

Cherece makes her professional and Regent's Park debut as Ensemble/Understudy Ti Moune in *Once On This Island* and is excited to begin her Musical Theatre journey alongside this incredible cast and creative team.

ASHLEY SAMUELS
Agwe

Training: Guildford School of Acting.

Theatre includes: *Oklahoma!* (Young Vic); *Hairspray* (London Coliseum); *Cruel Intentions* (Edinburgh Fringe, George Square Gardens); *Night of the Living Dead - Live* (Pleasance); *Fun Home* (Young Vic); *Motown The Musical* (Shaftesbury); *The Book of Mormon* (Prince of Wales); *The Toxic Avenger* (Southwark Playhouse); *The World Goes 'Round* (Stephen Joseph Theatre).

Television includes: *Prince Andrew the Musical* (Channel 4); *A Killer Party* (streamed online).

Short film includes: *FiveTwoSix*.

Recordings include: *Footballers Wives: The Musical*.

Concerts include: *Kinky Boots* (Theatre Royal Drury Lane); *Taboo: 20th Anniversary* (London Palladium); *Now 80's* (Birmingham Symphony Hall); *Sunset Boulevard* (Royal Albert Hall).

Workshops include: *Nero*;

Too Wong Foo; *The Time Traveller's Wife*; *Sammy*; *The Osmonds*; *Zombies*; *Pattie Shop Diaries*; *Back to the Future: The Musical*.

LEJAUN SHEPPARD
Papa Ge

Training: Guildford School of Acting.

Theatre includes: *Come from Away* (Phoenix Theatre); *Little Women* (Park Theatre); *Tina: The Tina Turner Musical* (Aldwych Theatre); *The Book of Mormon* (Prince of Wales Theatre); *Godiva Rocks* (Belgrade Theatre).

Television includes: *Desperate Measures* (Channel 5).

Short film includes: *Pragma*.

MARCO TITUS
Ensemble / Cover Daniel & Armand

Training: The Royal Central School of Speech and Drama; The University of Cape Town Opera School; The Italia Conti Associate School.

Theatre includes: *Land of Lost Content* (The Pleasance Theatre, Best Ensemble Performance on Theatre Weekly's Best of the Fest, Guardian's Readers' Favourite Stage Shows of 2022); *Mandela – A New Musical* (Young Vic); *Lift The Musical* (Southwark Playhouse).

Workshops include: *Mandela* (Young Vic).

Dance credits include: *A Christmas Carol* (New Victoria Theatre, Woking).

Opera includes: *Mikado* (Royal Hall, Harrogate); *La Traviata* (Artscape Opera House); *The Magic Flute* (Nelson Mandela Theatre).

Commercial credits include: *Clearasil*; *Hellman's Mayonnaise*; *Nintendo DS*.

Marco is also recipient of Best Leading Actor in a Play or Musical, Cape Theatre Awards, South Africa, 2015.



NAY-NAY



CHERECE RICHARDS



ASHLEY SAMUELS



LEJAUN SHEPPARD



MARCO TITUS

YOUNG COMPANY

PLAYING LITTLE GIRL / LITTLE TI MOUNE:



JANAI BARLETT

Modelling includes: *Historical Palaces 2023 Campaigns* (Merlin Entertainment); Janai has also been a Cocoa Girl Magazine cover model. Janai is delighted to make her professional stage debut at Regent's Park Theatre in *Once on this Island*.



KIRSTEN MUZVURU

Theatre includes: *Identical the Musical* (Nottingham Playhouse); *Aladdin* (UK Productions). **Television includes:** *Giggle Wiggle* (Baby TV) **Commercial credits include:** Lloyds Bank. Kirsten is from Basingstoke and is so excited to making her west end debut at Regent's Park. She would like to thank her family, dance teachers and agent for all their support.



LEXI KOWLESSAR

Theatre includes: *The Visit* (National Theatre); *The Drifters Girl* (Garrick Theatre); *Snow White and the Seven Dwarfs* (Kenneth More Theatre). **Television includes:** *Black History Month* (ITV); *Nickelodeon Unedited* (Nickelodeon); *ABRACADOPERA* (Sky Kids). **Commercials includes:** *Barclays Campaign* (BBH); *ASDA- Jump into Autumn* (Havas Worldwide).



NIELLE SPRINGER

Nielle Springer has enjoyed being cast in a number of leading roles since 2020. **Theatre includes:** *Fantastically Great Women Who Changed the World* (UK tour). **Television includes:** *The Fuck It Bucket* (Netflix); *Small Axe* (BBC); *Black is King* Music Video (Beyonce). **Screen includes:** *Matilda the Musical*. **Commercial includes:** Vodafone 'Parental Control Hub'.



NESISA MHINDU

Theatre includes: *Billy Elliot the Musical* (Curve Theatre). Nesisa made her theatrical debut in Curve Theatre's production of *Billy Elliot the Musical* in 2022. Nesisa is very excited to embark on this new journey with Regent's Park Open Air Theatre, playing the role of Young Ti Moune.



OLIVIA ST LOUIS

This is Olivia's first performance in the West End and she is very excited to be joining the cast of *Once On This Island*.

SONGS

1. PROLOGUE / WE DANCE
2. ONE SMALL GIRL
3. WAITING FOR LIFE
4. AND THE GODS HEARD HER PRAYER
5. RAIN
6. PRAY
7. FOREVER YOURS
8. THE SAD TALE OF THE BEAUXHOMMES
9. TI MOUNE
10. MAMA WILL PROVIDE
11. WAITING FOR LIFE (REPRISE)
12. SOME SAY
13. THE HUMAN HEART
14. PRAY (REPRISE)
15. SOME GIRLS
16. THE BALL
17. ANDREA SEQUENCE
18. FOREVER YOURS (REPRISE)
19. A PART OF US
20. WHY WE TELL THE STORY

IN REHEARSALS





Photos: Marc Brenner

Regent's Park Theatre presents

10 May – 10 Jun 2023

ONCE ON THIS ISLAND

A MUSICAL

book & lyrics by
LYNN AHRENS

music by
STEPHEN FLAHERTY

Based upon the novel *My Love, My Love* by Rosa Guy

COMPANY

Stephenson Ardern-Sodje	Daniel
Bernadette Bangura	Ensemble
Courtney-Mae Briggs	Andrea
Gabrielle Brooks	Ti Moune
Hanna Dimtsu	Swing
Jonathon Grant	Armand
Emilie Louise Israel	Erzulie
Chris Jarman	Tonton Julian
Anelisa Lamola	Asaka
Cassandra Lee	Ensemble
Natasha Magigi	Mama Euralie
Newtion Matthews	Ensemble
Antoine Murray	Ensemble
Nay-Nay	Swing
Cherece Richards	Ensemble
Ashley Samuels	Agwe
Lejaun Sheppard	Papa Ge
Marco Titus	Ensemble

YOUNG COMPANY

Janai Bartlett	Little Girl / Little Ti Moune
Lexi Kowlessar	Little Girl / Little Ti Moune
Nesisa Mhindu	Little Girl / Little Ti Moune
Kirsten Muzvuru	Little Girl / Little Ti Moune
Nielle Springer	Little Girl / Little Ti Moune
Olivia St Louis	Little Girl / Little Ti Moune

CREATIVE TEAM

Phil Bateman	Musical Supervisor
Aundrea Fudge	Dialect Coach
Niamh Gaffney for Autograph	Associate Sound Designer
Jimmy Grimes	Puppet Co-Designer
Jessica Hung Han Yun	Lighting Designer
Ola Ince	Director
Niquelle LaTouche	Associate Choreographer
Nick Lidster for Autograph	Sound Designer
Georgia Lowe	Set Designer
Ingrid Mackinnon	Season Associate – Intimacy Support
Lindsay McAllister	Associate Director
Rachel Murphy	Assistant Musical Director
Philip d'Orléans	Fight Director
Chris Poon	Musical Director
Kenrick 'H20' Sandy	Choreographer
Melissa Simon-Hartman	Costume Designer
Jacob Sparrow	Casting Director
Pip Terry	Design Associate
Annetette Verspeak	Voice & Text Director

Nicki Barry	Deputy Stage Manager
Andy Beardmore	Production Manager
Chris Cahill	Costume Supervisor
David Curl	Company Stage Manager
Raisa 'Roo' Daya	Assistant Stage Manager
Chris Easton	Assistant Production Manager
Carole Hancock	Wigs, Hair & Make Up Supervisor
Andy Patterson	Assistant Stage Manager
Lizzie Frankl for Propworks	Props Supervisor

BAND

Dan Ellis	Percussion
Jessamy Holder	Reeds
Wayne Matthews	Bass Guitar
Rachel Murphy	Assistant Musical Director / Keys 2
Chris Poon	Musical Director / Keys 1
Benedict Wood	Guitars
Lucy Baker-Swinburn	Keyboard Programmer
Richard Weeden	Orchestral Manager

COVERS

Bernadette Bangura	Erzulie
Jonathon Grant	Agwe
Cassandra Lee	Mama & Asaka
Newtion Matthews	Tonton & Papa Ge
Antoine Murray	Daniel & Armand
Cherece Richards	Ti Moune
Marco Titus	Daniel & Armand

Presented by arrangement with Musical Theatre International
www.mtishows.co.uk

Originally Directed and Choreographed on Broadway by Graciela Daniele

Playwrights Horizons, Inc. Produced ONCE ON THIS ISLAND Off-Broadway in 1990

Originally Produced on Broadway by The Shubert Organization, Capital Cities/ABC, Inc.

Suntory International Corporation and James Walsh, In Association With Playwrights Horizons

FOR REGENT'S PARK THEATRE LTD

ARTISTIC & ADMINISTRATION

Creative Associate **Nic Wass**
Associate General Manager **Arienne Brooks**
Administration Assistant **Minnie Cunningham**
Dramatherapists **Lou Platt & Carol Cumberbatch** for The Artist Wellbeing Company
Accountants **Anna Ganjolla** for AG Theatrical Accounting

BARS & DINING

Head of Bars, Dining & Commercial Events **Tanith Lindon**
Head Chef **Dean Fawcett**
Sous Chef **Benjamin Forson**
Chef De Partie **Camara Lassine, Jim Liddersdale**
Bars & Dining Duty Managers **Stephen Hamilton, Joel Lockhart, Lucy Menzies & Giovanna Rumma**
Bars & Dining Supervisors **Maria Araba, Lois Campbell, Temi Erinle, Harry Hemingway, Hebe Hemingway-McGhee, Hazel Karooma-Brooker, Luke Makins, Jenny West**
Bars & Dining Assistants **Daniella Abrahams, Aretha Ahunanya, Adele Alita, Testify Anyahamiwe, Erin Bates, Simran Bhandari, Lili-Evangeline Bryden, Claudia Buchanan, Jahdean Creese, Larissa Daunat, Luke Dawkins, Lucy De Silva, Noruwa Edokpolor, Lily Guy, Nicole Ingram, Andrea Johnson, Freya Kellyman, Jessica Konzon, Holly Lake, Victoria Leigh, Ryan Lennon, Elisia Lopes, Che La McKenzie Lewis, Maisie McNeice, Tillie McNeice, Vanessa McNeice, Cordelia Mizen, Jimmy Mooney, Royalty Mutebe, Elle Nash, Toni Ogunlana, Holly Parker, Keelan Payne, Hosanna Serukenya, Tobi Shitta, Raheemat Sofola, Alexandru Sones-Dawkins, Megan Taggart, Yuino Tokumaru, Megan Wheatley**
Kitchen Assistant **Hermann Djah Jose Gnapi**
Kitchen Porter **Catherine Pallud**

COSTUME, HAIR & MAKEUP

Assistant Costume Supervisor **John Mannion**
Assistant WHAM Supervisor **Sarah Lou Packham**
Head of Wardrobe **Kat Day-Smith**
Deputy Head of Wardrobe **Adam Rainer**
Wardrobe Assistants **Natalia Alvarez, Molly Fraser, Kay Hill, Abi Hulse, Abbie Johns, Emily Simpson, Lucie Smith, Pat Farmer, Gabriel Firth, Emily Kingston-Lee, Ty McKenzie, Elaine Moore, Barbara Nyarko, Marelle Steblecki, Les Woolford, Gilly Church**
Dressers
Costume Makers
Head of Wigs, Hair & Makeup **Rose Williams**
Deputy Head of WHAM **Tevae Humphrey, Lee-Anne Willoughby, HUM Studio Wigs LTD**
WHAM Assistants
Wigs supplied by **Brian Franklin**

ESTATES

Estates & Environment Manager **Joe Kirk**

LIGHTING

Head of Lighting **Graeme Smith**
Chief LX **Ethan Howlett**
Lighting Technician **Tamykha Patterson**
Followspot Operators **Ellie Cummings, Ben Wilson**
Lighting Hire Supplied by **Whitelight**

MARKETING & PRESS

Marketing Manager **Alice Gordon**
Marketing Officer **Amy Wall**
For Jo Allan PR **Jo Allan, Freya Cowdry, Kitty Greenleaf, Tom Kershaw-Green, James Lever**

PARTNERSHIPS & PHILANTHROPY

Partnerships & Philanthropy Manager **Eleanor Ranson**
Partnerships Assistant **Shauna Gavaghan**

PRODUCTION

Head of Technical **Chris Easton**
Head of Stage **Matilda Koli**
Production & Technical Assistant **Jacob Adams**
Stage Technician **Amy Boucher**
Show Crew **Arden Grant-Davies**
Production Carpenters **Nick Blount, Matt Day-Smith, Paul Riddiford, Jake Upward**
Production Rigging **Nick Campbell & Ritchie Owens** for Mechstage
Scenic Painters **Cherrie Race & Tash Shepherd**
Crew Supplier **The White Storey**
Set Constructed & Painted by **Set Up Scenery**
Fire Effect by **Event FX**
Transport **Paul Mathews**
Jimmy Grimes **Puppet Fabrication & Puppet Direction**
Props by **Propworks London Workshop, Holly Isaacs** for Propworks
Associate Prop Supervisor **Poppy Morris** for Propworks
Props Assistant **Rosie Young** for Propworks
Stage Management **Zoë Mackinnon**
Placement
H&S Consultant
Physiotherapist
Chaperones **Chris Luscombe** for Production Safety
Richard Lewis for Injury Therapy Pro Limited.
Griffin Chaperones

SENIOR MANAGEMENT TEAM

Artistic Director **Timothy Sheader**
Executive Director **James Pidgeon**
Director of Communications & Audiences **Laura Arends**
Director of Production & Estates **Andy Beardmore**
Diversity & Inclusion **mezze eade**
Associate **Lauren King**
Director of Artistic Planning & Administration

SOUND

Season Rig Design **Nick Lidster** for Autograph
Sound No 1 **James Hassett**
Sound No 2 **Candice Weaver**
Sound No 3 **Jamie Forester**
Lead Production Sound Engineer **Larry Golland**
Production Sound Engineers **Ian Brame, Dom Bell, Jonny Shuttler, Ewan Exon, Sam Brazier**
Autograph
Sound Hire supplied by

VISITOR SERVICES

Head of Visitor Services & Operations **Jack Gavin**
Visitor Services Managers **Sophie McCallum, Paul Rumbelow**
Visitor Services Duty Managers **Maria Koutsou, Fiona Nelson**
Front of House Supervisors **Esther Akano, Adam Dolan, Phoebe Fairchild, Phoebe Ralph, Adam Dolan, Amber Dowse, Phoebe Fairchild, Kenia Fenton, Salomé Grácio, Eleanor Parker-Harbord, Wendy Parry, Martha Wrench**
Box Office Assistants
Front of House Assistants **Molly Barton, Maria Brazao, Jamie Burchall, Sas Coumbe, Ryan Crabbe, Cassia Crimin, Joel Diamond, Gemma Flewitt, Louise Hoving, Kathleen Hefferon, Edward Justham, Claire Lane, Emily Latter, Ben Lundy, Maille Lyster, Paul MacDonald, Jamie Maier, Catherine Marriott-Brown, Katie McKenna, Izzy Milenkovic, Amy Nicholas, Katie Orr, Wendy Parry, Lucy Prince, Lance Ray, Aanya Robins, Nathan Seatter-Messer, Joshua Stephens, Isobel Sutherland & Millie Weaver**

With thanks to: crowdEngage (SMS ticketing), Liz Eddy, Feast Creative (design), Beth Hitchcock, Location Creation, SINE Digital (digital marketing), Spektrix (ticketing), SURE (print), The Umbrella Rooms (filming), Natalie Yalden

Photographers: Marc Brenner (rehearsal & production), David Jensen (venue), Ollie Rosser (pre-production)

AUTHORS

LYNN AHRENS | Book & Lyrics

Lynn Ahrens won Tony, Drama Desk and Outer Critics Circle Awards and received two Grammy nominations for Broadway's *Ragtime*. For Twentieth Century Fox's animated feature film *Anastasia*, she was nominated for two Academy Awards and two Golden Globes. She and longtime collaborator Stephen Flaherty received the Oscar Hammerstein Award for Lifetime Achievement, and in 2015 they were inducted into the Theater Hall of Fame. Broadway: *Anastasia*; *Once On This Island* (Olivier Award, Best Musical; Tony nominations, Best Book and Score); *Seussical* (Grammy nomination); *My Favorite Year*; *Chita Rivera: The Dancer's Life*; *Rocky*; *Madison Square Garden's A Christmas Carol*; *Ragtime* (2010 Broadway revival). Off-Broadway and regional: Lincoln Center Theater's *Dessa Rose*, *The Glorious Ones* (both Drama Desk-nominated) and *A Man of No Importance* (Outer Critics Circle Award, Best Musical); *Lucky Stiff*; *Little Dancer* (Kennedy Center world premiere). Film and television credits include *A Christmas Carol* (NBC-TV); *Camp* (IFC Films); *Schoolhouse Rock* (ABC-TV) and others. (Emmy Award and four Emmy nominations). She is a Council member of the Dramatists Guild of America, a co-founder of the Dramatists Guild Fellows Program, and a Lilly Award winner for Lyrics.

STEPHEN FLAHERTY | Music

Stephen Flaherty is the composer of the Broadway musicals *Ragtime* (Tony, Drama Desk, OCC Awards, two Grammy nominations); *Seussical* (Grammy, Drama Desk nominations); *Once On This Island* (Tony nomination, Olivier Award, Best Musical) and *Rocky*. Additional Broadway includes *Chita Rivera: The Dancer's Life* (original songs) and Neil Simon's *Proposals* (incidental music). Stephen has also written four musicals at Lincoln Center Theatre: *The Glorious Ones* (OCC, Drama Desk nominations), *Dessa Rose* (OCC, Drama Desk nominations), *A Man of No Importance* (OCC, Best Musical, Drama Desk nomination) and *My Favorite Year*. Other theatre includes *In Your Arms* (Old Globe), *Little Dancer* (Kennedy Center); *Lucky Stiff* (Playwrights Horizons) and *Loving Repeating: A Musical of Gertrude Stein* (Chicago's Jefferson Award, Best New Musical.) Film includes *Anastasia* (two Academy Award and two Golden Globe nominations), the documentary *After the Storm* and *Lucky Stiff*. Mr. Flaherty's concert music has premiered at the Hollywood Bowl, Boston's Symphony Hall, Carnegie Hall, the Guggenheim Museum and Symphony Space. This year celebrates Stephen's 32-year collaboration with lyricist-librettist Lynn Ahrens. Stephen and Lynn are members of the Dramatists Guild Council and co-founders of the Dramatists Guild Fellows Program. In 2015 they were inducted into the Theater Hall of Fame. Upcoming: the stage adaptation of *Anastasia*.

CREATIVE TEAM

PHIL BATEMAN Musical Supervisor

Phil is a hugely experienced Musical Supervisor, Arranger and MD, having worked on many award winning shows in the West End, nationally and the US.

For Regent's Park: *As You Like It*, *Hello Dolly*, *Gigi*.

Theatre includes: *Bugsy Malone* (Lyric Hammersmith/Alexandra Palace/UK Tour); *Get Up Stand Up! The Bob Marley Musical* (Lyric); *Billy Elliot* (Victoria Palace); *Our House* (Cambridge); *The Man in the White Suit* (Bath Theatre Royal/Wyndhams); *Local Hero* (Edinburgh Lyceum); *One Love* (Birmingham Rep); *The Lorax* (Old Vic/Toronto/Minneapolis/San Diego); *Made in Dagenham* (Adelphi); *Harry Hill's X Factor Musical: I Can't Sing* (London Palladium); *Imagine This* (New London Theatre); *The Miser* (Bath Theatre Royal/Richmond/Garrick); *Present Laughter/She Loves Me* (Chichester Festival Theatre); *Vernon God Little/After Miss Julie/Three Sisters/Human Comedy* (Young Vic); *Piaf* (Sheffield Crucible); *Return to the Forbidden Planet* (UK Tour).

Film includes: *Kinky Boots* (Miramax/BBC Films); *Cemetery Junction* (Columbia Pictures).

Television includes: *Big Performance* (CBBC); *Extreme School* (CBBC).

AUNDREA FUDGE Dialect Coach

Aundrea Fudge is an accent/dialect and speech coach from New York. She has degrees in Linguistics and English Literature, a certificate in TESOL, and singing training in Opera and Musical Theatre. She completed her MFA in Voice Studies from the Royal Central School of Speech and Drama in 2018 and is currently working and residing in London. She currently teaches at The Royal Central School of Speech and Drama, Arts Ed, and The Royal Academy of Dramatic Arts and has done accent workshops for Bristol Old Vic Theatre School, LAMDA, Rose Bruford,

and The LIR Academy. She has also run both accent and linguistic workshops for the Midlands Voice Conference and currently runs an accent workshop with The Monobox.

Recent theatre credits include: *Blackout Songs* (Hampstead Theatre); *Bootycandy* (Gate); *On The Ropes!* (Park); *Driving Miss Daisy* (Barn Theatre); *Bring It On: The Musical* (Southbank Centre); *Yellowman* (Orange Tree Theatre).

NIAMH GAFFNEY for Autograph Associate Sound Designer

Niamh is a full-time member in the Sound Design Department at Autograph Sound.

Theatre includes: *Pride and Prejudice [sort of]* (UK Tour); *Cabaret* (KitKatClub); *Bridgerton*, *Guardians of the Galaxy* (Secret Cinema); *Jerusalem* (Apollo); *Monopoly Life-Sized* (Gamepath Entertainment); *Peaky Blinders Immersive London* (Immersive Everywhere).

JESSICA HUNG HAN YUN Lighting Designer

Theatre includes: *My Neighbour Totoro* (RSC/Barbican); *Straight Line Crazy* (The Shed, New York/Bridge); *The Glow, seven methods of killing kylie jenner* (Public Theatre, New York/Woolly Mammoth, Washington DC); *Pah-La* (Abbey, Dublin); *Living Newspaper Edition 7* (Royal Court); *The Mirror and the Light* (Gielgud); *Anna X* (Lowry/Pinter); *Marys Seacole*, *Blindness* (Donmar Warehouse); *Out West* (Lyric Hammersmith); *Inside* (Orange Tree Theatre); *The Band Plays On, She Loves Me* (Sheffield Crucible); *Dick Whittington* (National Theatre); *Rockets and Blue Lights* (Royal Exchange); *Faces in the Crowd*, *Mephisto*, *Dear Elizabeth*, *The Human Voice* (The Gate); *Equus* (Theatre Royal Stratford East/ETT/Trafalgar Studios/UK Tour); *Armadillo* (The Yard); *Reasons To Stay Alive* (Sheffield Theatres/ETT/UK Tour); *One* (HOME Manchester/UK Tour/International Tour); *Forgotten* (Moongate/New Earth/Arcola/Theatre Royal Plymouth); *Hive City Legacy* (Hot

Brown Honey/Roundhouse); *Fairview* (Young Vic) *Cuckoo* (Soho Theatre).

Dance includes: *HOME* (Rambert2).

Other credits include: *Guardians of the Galaxy: The Live Immersive Experience* (Secret Cinema); *Winter Light* (commissioned by the Museum of the Home).

Awards include: Knight of Illumination Award for Plays, Off West End Award – Best Lighting Design (Equus). Olivier Award for Best Lighting Design (*My Neighbour Totoro*).

OLA INCE Director

Ola is a critically acclaimed and award-winning director. In 2012 she was the Boris Karloff Bursary recipient. In 2015 Ola became a BBC Performing Arts Fellow, Resident Associate Director at the Lyric Hammersmith Theatre and Red Women of the Year nominee. In 2016 she became the Genesis Future Director Award winner and Artistic Associate at Lyric Hammersmith and Theatre Royal Stratford East. In 2018 she won the h100 Theatre & Performance Award. In 2019 she was named one of the Elle list's '50 Game Changers of Now.' She was the recipient of the Peter Hall Bursary Award in 2020.

Theatre includes: *Christmas in the Sunshine* (Unicorn); *Heart* (Minetta Lane Theatre, NY); *Is God Is*, *Poet In Da Corner* (Royal Court); *Romeo & Juliet* (Globe); *The Knife of Dawn* (Royal Opera House); *The Brave Little Tailor* (Unicorn/Illuminations); *Appropriate* (Donmar Warehouse); *The Convert*, *Dutchman* (Young Vic); *Twilight: Los Angeles, 1992* (Gate); *Start Swimming* (Young Vic/Summerhall); *Rachel*, *The Soft of Her Palm* (Finborough).

As Associate Director: *Tina - The Tina Turner Musical* (Broadway, London, Hamburg & Utrecht); *Bugsy Malone* (Lyric Hammersmith); *Tipping The Velvet* (Lyric Hammersmith/Royal Lyceum, Edinburgh).

TV includes: *Viral* (Headlong).

She is the winner of the BBC Performing Arts Fellow Award (2015), Genesis Future

CREATIVE TEAM

Director Award (2016), h100 Theatre & Performance Award (2018), Elle list's '50 Game Changers of Now' (2019), Peter Hall Bursary Award (2020) and the **Broadway Women's Fund- Women to Watch on Broadway (2023)**.

NIQUELLE LATOUCHE Associate Choreographer

Niquelle is an artist-educator invested in speaking from a place of authenticity to encourage creative collaboration and togetherness. Founder of Niquelle LaTouche Arts (2014) and It Takes a Village Collective (2020) which encourage proactive social change.

Theatre includes: *M(other)land* (TATE Gallery/Institute of Contemporary Arts London/Albany Theatre/Studio3Arts./Barking Broadway/Rich Mix London); *Neg (ate)* (Battersea Arts Centre/Breakin Conventions Open Art Surgery/Sadler's Wells); *Karnival 2.0* (Boy Blue/Sadler's Wells/Barbican); *Uhuru* (Boy Blue/Barbican); *(Re)play* (Reading School of Dance/ACE Dance/Birmingham Crescent Theatre/The Place London); *S(he)d light* (Zinnema Belgium/Rich Mix); *Pressure* (Reading School of Dance/Impact Dance Chapters/Peacock).

Television includes: *Good for the Hood*; *This Girl Can*; *Come Dine With Me*; *Street Player*.

Music includes: *World Creole Music Festival* (Dominica); *Radio 1's Big Weekender* (BBC 1XTRA).

Other credits include: *Roundhouse Poetry Slam* semi finalist 2017, *Destination Carnival* (Artscape, South Africa) and *Notting Hill Carnival*.

NICK LIDSTER for Autograph Sound Designer

For Regent's Park: *101 Dalmatians*, *Jesus Christ Superstar* (also US Tour); *Evita*, *Little Shop of Horrors*, *The Turn of the Screw*.

Theatre includes: *Yeomen of the Guard* (ENO); *Cabaret* (The Kit Kat Club); *City of*

Angels (Garrick); *Sweet Charity*, *Pacific Overtures*, *Parade*, *Passion*, *Spelling Bee*, *The Vote* (also Channel 4), *Committee...* (Donmar Warehouse); *Martin Guerre* (UK Tour); *Miss Saigon* (UK Tour/Japan/Sweden); *Les Misérables* (UK Tour/Berlin/Belfast/Scandinavian Arena Concert Tour); *Sweeney Todd* (Royal Opera House/ENO); *Chitty Chitty Bang Bang* (UK Tour); *Sinatra* (Palladium/UK Tour); *Nicholas Nickleby* (Chichester Festival Theatre); *On the Town* (ENO); *Mother Courage* (National Theatre); *Privates on Parade* (Noel Coward); *A Chorus Line* (Palladium); *Urinetown* (Apollo); *The Last Five Years* (The Other Palace); *Kiss Me, Kate* (Opera North/UK & European Tour); *Calendar Girls* (UK Tour); *The Band* (UK Tour/Berlin).

Awards include: 2022 *Olivier Award for Best Sound Design*, *Cabaret* (The Kit Kat Club); *Olivier Award Nominations for Jesus Christ Superstar*, *Pacific Overtures*, *Parade*, *Mother Courage*.

GEORGIA LOWE Set Designer

Georgia trained on the Motley Theatre Design course, was a Linbury Prize for Stage Design finalist and trainee Designer for the Royal Shakespeare Company.

Theatre credits include: *The Trials* (Donmar Warehouse); *All Of Us*, *Dick Wittington*, *Mr Gum and the Dancing Bear – the Musical!* (National Theatre); *Henry VIII*, *Macbeth* (Globe); *Good Person of Szechwan*, *The Contingency Plan*, *Anna Karenina* (Sheffield Crucible); *Missing Julie* (Theatr Clwyd); *Klippies* (Young Vic); *Plenty* (Chichester Festival Theatre); *Equus* (Trafalgar Studios/UK Tour); *Cock* (Minerva Theatre); *Don Giovanni* (Nevill Holt Opera); *A Streetcar Named Desire* (Nuffield Theatre / UK Tour); *An Octoroon* (National Theatre/Orange Tree Theatre); *Othello* (Tobacco Factory / UK Tour); *The Twits* (Curve/UK Tour); *The Night Watch* (Royal Exchange); *Yen* (Royal Court Theatre / Royal Exchange); *Death of a Salesman* (Royal & Derngate / Tour); *Pomona* (National Theatre / Royal Exchange / Orange Tree Theatre).

Digital credits include: *The Twits* (Unicorn).

INGRID MACKINNON Season Associate: Intimacy Support

For Regent's Park: *Antigone*, *101 Dalmatians*, *Legally Blonde*, *Carousel* (Intimacy Support), *Romeo and Juliet* (Movement Director).

As Movement Director and Choreographer, theatre includes: *The Meaning of Zong* (Barbican/Bristol Old Vic/UK Tour); *Blue* (ENO); *Further than the Furthest Thing* (Young Vic); *Trouble in Butetown* (Donmar Warehouse); *Enough of Him* (National Theatre of Scotland); *A Dead Body In Taos* (Fuel Theatre); *The Darkest Part of The Night*, *Girl on an Altar* (Kiln); *Playboy of the West Indies* (Birmingham Rep); *Moreno* (Theatre 503); *Red Riding Hood* (Stratford East); *Antigone* (Mercury, Colchester); *Liminal – Le Gateau Chocolat* (King's Head); *Liar Heretic Thief* (Lyric Hammersmith); *Reimagining Cacophony* (Almeida); *First Encounters: The Merchant Of Venice*, *Kingdom Come* (RSC); *Josephine* (Theatre Royal Bath); *Typical* (Soho); *#WeAreArrested* (Arcola/RSC); *The Border* (Theatre Centre); *Fantastic Mr. Fox* (as Associate Movement Director, Nuffield Southampton/National/International Tour); *Hamlet*, *#DR@CULA!* (RCSSD); *Bonnie & Clyde* (UWL: London College of Music).

Intimacy credits include: *Es & Flo* (Wales Millennium Centre); *Phaedra* (National Theatre); *Super High Resolution* (Soho Theatre); *Enough of Him* (National Theatre of Scotland); *Girl on An Altar* (Kiln Theatre).

Ingrid won Best Choreographer at the Black British Theatre Awards 2021 for her work on *Romeo and Juliet* (Regent's Park).

Ingrid holds an MA in Movement: Directing and Teaching from Royal Central School of Speech and Drama.

LINDSAY MCALLISTER Associate Director

Originally from Scotland, Lindsay is a London-based creative, associate and performer.

For Regent's Park: *Carousel*.

Theatre includes: As choreographer: *Paper Hearts* (Edinburgh Fringe/Hamburg); *Three Guys Naked From The Waist Down* (Finborough); *A Mother's Song* (MacRobert Arts Centre, Stirling).

As associate/resident choreographer: *We're Few and Far Between* (The White Bear, London); *Be More Chill* (The Other Palace/Japan); *Hairspray* (UK Tour).

As a performer: *Grease* (Dominion/UK Tour); *42 Balloons* (Workshop); *Hairspray* (UK Tour); *Strictly Ballroom* (Leeds Playhouse/Toronto); *Bugsy Malone* (Lyric Hammersmith); *Seven Brides for Seven Brothers* (UK Tour); *A Chorus Line* (Tel Aviv).

Film includes: *Greatest Days*.

Other credits include: 2012 Olympic Opening Ceremony.

RACHEL MURPHY Assistant Musical Director

Rachel is a musical director & pianist currently working in London and around the UK. Originally from Glasgow, Rachel gained her BMus Hons in classical piano from Trinity Laban Conservatoire of Music and Dance in 2017 and then moved on to receive her MA in Musical Directing from the Royal Conservatoire of Scotland in 2021. Rachel is also passionate about working in education and works regularly as a piano teacher, rep coach and workshop leader.

Theatre credits include: As Musical Director: *Beauty & the Beast PHA Panto* (Spotlight Theatre); *Annie* (Towngate Theatre); *Made in Dagenham* (Greenwood Theatre).

As Assistant Musical Director: *We Will Rock You* (European Tour); *Club Tropicana The Musical* (UK Tour); *A Winter's Tale* (Rose Theatre).

As band member: *Frozen* (Theatre Royal Drury Lane); *Jersey Boys* (Trafalgar Theatre/UK Tour); *Mamma Mia* (UK Tour); *Strictly Ballroom* (UK Tour).

PHILIP D'ORLÉANS Fight Director

Philip is a member of the Equity Register of Fight Directors and on the teaching and examining staff of the British Academy of Stage and Screen Combat. He has worked throughout Europe and America, alongside his regular teaching commitments for RADA, Drama Studio London and other drama schools and universities. His screen work includes films for Warner Bros and Universal Pictures alongside documentaries for the BBC and Channel 4.

Theatre includes: *Measure for Measure*, *Hamlet*, *Merry Wives of Windsor*, *King Lear* (Globe); *The Kite Runner* (Broadway); *Ravenscourt*, *Botticelli In The Fire* (Hampstead); *Shakespeare In Love* (Norwegian National Theatre); *The Prince and The Pauper*, *Richard III*, *Henry VI* and *Bartholomew Fair* (Sam Wanamaker Playhouse); *For Services Rendered*, *Stitchers* (Jermyn Street Theatre); *Brassed Off* (Northern Broadways); *Richard III* (Rose Theatre, Blenheim); *Merry Wives of Windsor*, *Romeo & Juliet* (Guildford Shakespeare Company); *Henry V* (Rose); *Titus Andronicus* (RSC); *The Outsider* (The Print Room); *Brighton Rock* (Theatre Royal York).

Television includes: *Swordmaster for Lockwood & Co* (Netflix).

Opera includes: *Agreed* (Glyndebourne Opera); *Andrea Chenier* (Royal Opera House); *Simon Boccanegra* (Greek National Opera); *Romeo Et Juliette* (Korea National Opera).

CHRIS POON Musical Director

Chris is a Musical Director, who graduated with First Class honours in English Literature from the University of Warwick, before training at the Royal Conservatoire

of Scotland. Since graduating in the fall of 2018, his projects have ranged from new work and revivals to concerts and YouTube web series starring drag queens.

For Regent's Park: *Legally Blonde*.

Theatre includes: As Musical Director: *Rent* (Hope Mill); *Top Hat* (The Mill at Sonning); *Legend Trippers* (The Other Palace); *Nice Work If You Can Get It* (Upstairs at the Gatehouse). As *Musical Supervisor: The Windsors Endgame* (Prince of Wales). As *Assistant Musical Director: Tina: The Musical* (Aldwych); *Great British Bake Off: The Musical* (Cheltenham Everyman); *Bonnie & Clyde* (Theatre Royal Drury Lane).

Chris was nominated for Best Musical Director at both the OFFIES and BroadwayWorldUK awards for his work on the UK premiere of *Nice Work If You Can Get It* at Upstairs at the Gatehouse.

KENRICK 'H20' SANDY Choreographer

Kenrick 'H20' Sandy MBE is the co-founder and co-Artistic Director of Boy Blue, an Artistic Associate of the Barbican and renowned choreographer and performer.

Theatre includes: *Boy Blue: REDD* (Barbican); *Blak Whyte Gray* (Boy Blue/Sadler's Wells/HOME Manchester); *The Five & the Prophecy of Prana* (Barbican/UK Tour); *A Night With Boy Blue*, *Pied Piper: A Hip-Hop Dance Revolution* (Barbican).

Television includes: *Mood*; *The BAFTA Awards*; *All Stars*; *T2 Thinkspotting*; *Street Dance 3D*; *So You Think You Can Dance*.

Film includes: *R.E.B.E.L.*

Other credits include: *London 2012 Olympic Opening Ceremony* – winner of the Evening Standard's Beyond Theatre award; *Emancipation of Expressionism* – a set work on the GCSE Dance syllabus; *2010s* (Queen's Platinum Jubilee Pageant). Sandy has also produced choreography for artists including Wiz Kid, Black Sheriff, Jesy Nelson, FKA Twigs and Rita Ora and has also worked with brands such as Adidas and ASOS.

CREATIVE TEAM

MELISSA SIMON-HARTMAN Costume Designer

Melissa is a London born artist, costume and fashion designer best known for her contributions to Beyoncé's 'Black Is King' and most recently, her album 'Renaissance'. Extremely proud of her Trinidadian and Ghanaian heritage, both cultures heavily influence her work, both on stage and screen and through her own label, Simon-Hartman London.

Theatre includes: *Much Ado About Nothing* (RSC) – WhatsOnStage Award nomination for Best Costume Design

Television includes: *I Am Bolt*, *Black is King*, *Step Up*, *X Factor*, *Supacell*.

Music videos include: *Mood 4 Eva*, *My Power* (Beyoncé); *Love Sweet Love* (Little Mix); *Can't Let You Go* (Stefflon Don), *Ginger* (WizKid ft Burna Boy); *Woman* (Doja Cat).

JACOB SPARROW Casting Director

Jacob worked in the National Theatre Casting Department from 2015-2019 before becoming a freelance Casting Director. Prior to working at the NT, Jacob worked with Pippa Ailion Casting and Telsey and Company in New York, as well as alongside James Orange.

For Regent's Park: *Carousel*, *Our Town*.

Theatre includes: *As You Like It* (Soho Place); *Oklahoma!* (Young Vic/Wyndham's Theatre); *The Good Person of Szechwan* (ETT); *Village Idiot* (Nottingham Playhouse); *You Bury Me* (Bristol Old Vic); *Black Love* (Kiln); *Hedwig and the Angry Inch* (Leeds/HOME Manchester); *Anna Karenina*, *Much Ado About Nothing* (Sheffield Crucible); *Curious Incident of the Dog in the Night-Time* (UK Tour); *Jitney* (Old Vic Headlong/Leeds Playhouse); *Burn It Down* (Theatre Royal Stratford East); *LOVE*, *Faith, Hope and Charity* (NT/European tours); *The Book Thief* (Bolton Octagon); *Wuthering Heights* (Wise Children); *Hungry* (Soho Theatre); *Perspectives* (New Views); *2021 Roundabout Season*

(Paines Plough); *City of Angels* (Garrick); *Hadestown*, *Pericles*, *Follies*, *Amadeus*, *Queer Season*, *Rutherford and Son*, *Faith Hope and Charity*, *Mr Gum*, *Downstate* (National Theatre); *LOVE* (National Theatre/International Tour/Film).

ANNEMETTE VERSPEAK Voice & Text Director

Annemette Verspeak is Head of Voice at the Guildhall School of Music and Drama. In her freelance practice she coaches on Executive Leadership and Restorative Practice.

Theatre includes: *Zam Zam Room* (Battersea Arts Centre/ Ronnie Scott's); *Vote Dizzy* (Soho); *The Soldier's Tale*, *Pinocchio*, *Time Code* (Royal Opera House); *History Boys*, *The Coram Boy*, *Caroline, or Change* (NT); *Orestes, Romeo & Juliet*, *Caucasian Chalk Circle*, *Bronte* (Shared Experience); *Ramayana* (Lyric Hammersmith); *Give Us A Hand* (Little Angel); *The Miser* (Watermill); *The Roaring Girl*, *Ardern of Faversham* (RSC); *The History Boys* (UK Tour); *Jekyll and Hyde* (UK Tour); *Much Ado About Nothing* (Watford Palace).

Television includes: *Fairy Tales*; *Billy Goat Gruff*, *Eastenders* (BBC).

Film includes: *Star Wars: Rogue One*.

Workshops include: *Poetry and the Feminine Heart*.

Other credits include: *Google's Voice Search/Home*.

REGENT'S PARK OPEN AIR THEATRE IS ONE OF THE LARGEST PRODUCING THEATRES IN LONDON. CELEBRATING OUR UNIQUE AND EXPERIENTIAL OUTDOOR SETTING, WE CREATE POPULAR, ENRICHING AND UNEXPECTED THEATRE THAT PROVIDES A LENS INTO THE HERE AND NOW.



Regent's Park Open Air Theatre is managed by Regent's Park Theatre Ltd (RPT) and is licensed by Westminster City Council. RPT has three wholly owned subsidiaries, Regent's Park Enterprises Ltd through which it operates the bar and catering services for the theatre, Regent's Park Productions Ltd and Regent's Park Ventures Ltd.

REGENT'S PARK THEATRE LTD
Registered in England No. 759557
Registered Charity No. 231670

Patron: Judi Dench DBE

Joint Chief Executives
Timothy Sheader (Artistic Director)
James Pidgeon (Executive Director)

Trustees
Charlotte Aherne (Vice Chair)
Partha Bose
Jaya Carrier
Anna Fleischle
Stuart Griffiths OBE (Chair)
Tyrone Huntley
Kate Millward
Steve Pennington
Toni Racklin
Jim Reed
Dr Philippa Simpson
Samantha Spiro
James Pidgeon (Company Secretary)

REGENT'S PARK ENTERPRISES LTD
Registered in England No. 06626067
Directors
Stuart Griffiths OBE
James Pidgeon

REGENT'S PARK PRODUCTIONS LTD
Registered in England No. 09082210
Directors
Stuart Griffiths OBE
James Pidgeon
Sir Peter Rogers

REGENT'S PARK VENTURES LTD
Registered in England No. 09279742
Directors
Stuart Griffiths OBE
James Pidgeon
Sir Peter Rogers

The Registered Office for all companies is:
Stage Door Gate, Open Air Theatre,
Inner Circle, Regent's Park, London, NW1 4NU
Telephone: 0333 400 3561
Group VAT Registration No: 997 3013 90

LOOKING BACK AT OUR 2022 SUMMER SEASON

149,942 TICKETS SOLD
(UP 46,384 ON 2021
AND 7,492 ON 2019)

48,594 TICKETS SOLD AT £25 OR LESS

WE EMPLOYED: **56** CREATIVES, **70** PERFORMERS, **24** MUSICIANS, **12** YOUNG PERFORMERS, & **2** PUPPIES

244 SEASONAL STAFF EMPLOYED

ACROSS STAGE MANAGEMENT, PRODUCTION, TECHNICAL, VISITOR SERVICES & CATERING

30% INCREASE IN AUDIENCES FROM THE GLOBAL MAJORITY, COMPARED TO 2019

2 PERFORMANCES LOST TO RAIN

2000 ACCESS BOOKERS

£40.86 AVERAGE TICKET YIELD (DOWN £6.54 ON 2021)

125,000 VIEWS OF OUR 2022 VIDEOS

23.5% GROWTH IN SOCIAL MEDIA FOLLOWERS ACROSS ALL PLATFORMS

16.4% OF BOOKINGS MADE IN THE 48 HOURS LEADING UP TO A PERFORMANCE, COMPARED TO 8.4% IN 2019

8 HEAT STOPS

416 BREEZE MEMBERS (AGED 18-25)

7281 CUSTOMERS SERVED AT THE GRILL

2 WATER BOTTLE REFILL STATIONS ARE NOW AVAILABLE

5 NEW TRUSTEES APPOINTED FOLLOWING AN OPEN RECRUITMENT PROCESS WHICH RESULTED IN 140 APPLICATIONS

SETS REUSED & RECYCLED ACROSS THE SEASON AS WELL AS DONATED TO OTHER THEATRE COMPANIES & ARTISTS

Jude's JUDE'S ICE CREAM **SOLD** BRITAIN'S FIRST CARBON NEGATIVE ICE CREAM

792 MEMBERS & PATRONS

6621 PIZZAS SOLD AT THE PIZZA OVEN

100% BIODEGRADABLE & COMPOSTABLE PONCHOS REPLACED PLASTIC ALTERNATIVES

66% OF BOOKERS LIVE WITHIN A 20 MILE RADIUS OF THE THEATRE

23 CITIES VISITED AS PART OF JESUS CHRIST SUPERSTAR'S LATEST TOUR OF NORTH AMERICA

ONE MAJOR CAPITAL PROJECT STARTED, FOCUSING ON REPLACING THE TECHNICAL GALLERY AND IMPROVING PRODUCTION WORKSHOPS

10 ASSISTED PERFORMANCES INCLUDING BSL INTERPRETED, AUDIO DESCRIBED, CAPTIONED & RELAXED

AS A RESULT OF COVERED DINING BEING A SUSTAINABLY RUN RESTAURANT, **1259** FRUIT TREES WERE PLANTED IN TANZANIA **COMBATTING** DEFORESTATION & SUPPORTING LOCAL COMMUNITIES



SARACENS FOUNDATION

The Saracens Foundation is the charitable arm of Saracens rugby club.

We work collaboratively to enhance the education, employability and health of our communities, to build a stronger and more inclusive society for all.



SUPPORTERS

CORPORATE PARTNERS

Platinum

Baker McKenzie
Canard-Duchêne
Saracens

Gold

Delancey
Home House
Reed Smith

Silver

AlixPartners UK LLP
Cravath, Swaine & Moore LLP
CSBF Capital Partners Ltd.
The Mackintosh Foundation

NEW SEAT SPONSORS

Craig Hardie
Joslyn Head

TRUSTS & FOUNDATIONS

The Rose Foundation

OFFICIAL HOTEL PARTNER



EDWARDIAN HOTELS
LONDON

CHAMPAGNE PARTNER



SPIRITS PARTNER



MEDIA PARTNERS



PATRONS

Diamond

Stage Audience
Melinda Atwood
Elaine Bancroft & Norton York
Mark Dean

Matthew Dean
Russell & Irina Jacobs
Sandra & Andrew Treagus

Platinum

Rosemary Cox
Steven Joseph
Cyril & Heather Mundy

Will, Lisa, Gracie &
Tilly Thomson

Gold

Jeffrey & Mary Archer
Lorraine Barnes
Rotha Bell
Beatrice Blazye
Claire & Graham Buckland
David Dutton
Jacky Erwteman
Susan Farmer
Steve Edge & Jane Fogg
Jackie & Michael Gee
Patricia & John Glasswell
John &
Sheelagh Glover

Malcolm &
Caroline Johnston
Nina Kaye
Sue Kinder
Lindsay Miller
Sarah & Patrick Ryan
Patrick & Rene Sandberg
Andrew & Rhiannon Sargent
Chris Simpson
Rosalyn & Nicholas Springer
Kimberly Stallvik
Jim & Nouchine Stidham
Liz Wheeler

Silver

Jacqueline Dowles
Robyn Durie
Anthony & Minnie Durrant
Jane & Neil Elias
Kim Franklin KC
Peter & Lynne Graham
Caroline Harper
Annabel Jack
Shitij Kapur
Ian McGarry

Sonia Mihelic
Nancy Miller & Glen Ireland
Julia Phillips
Lara & Eric Reichle
Jeremy & Kiran Sandford
Brian Smith
Ivor Spiro
Andrea & Michael Taylor
Richard & Susan Wolff
David & Vivienne Woolf

And all our Anonymous Patrons and Donors

SUPPORT US

DONATE TODAY

By purchasing a ticket for this performance you are already supporting the theatre. However, if you would like to further your support, you can do so by making a one off donation. You can donate via text* by texting OPENAIR followed by your preferred donation amount to 70085.

Text OPENAIR5 to 70085 to donate £5
Text OPENAIR10 to 70085 to donate £10
Text OPENAIR20 to 70085 to donate £20

** Text donations cost your donation amount plus one standard rate message.*



ANNUAL MEMBERSHIP – £50

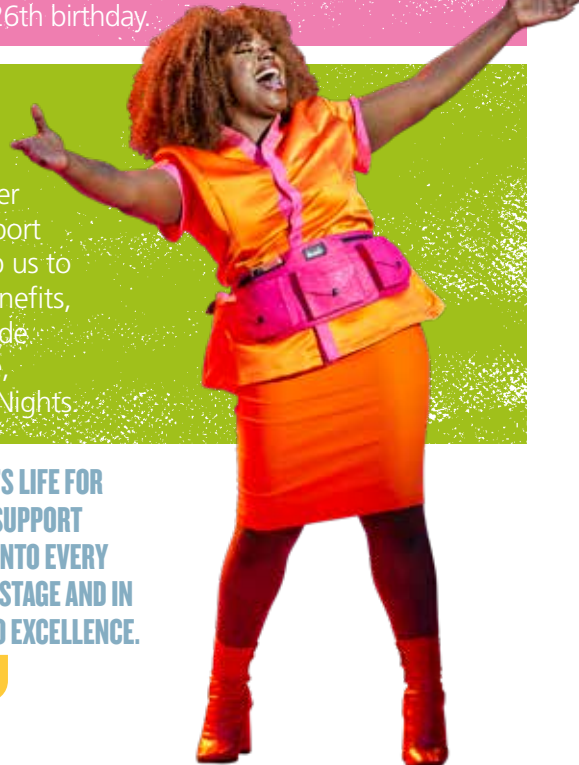
Our Members enjoy discounts on tickets, priority booking, quarterly e-newsletters and, to further their association with the theatre, access to exclusive events. Sign up as a Member today to ensure you're one of the first to hear about our 2024 season.

BREEZE – £10

Aged 18 – 25? BREEZE membership at the Open Air Theatre gives you access to the perfect summers' evening - £10 tickets for you and a friend, as well as discounts at our bar, The Grill and The Pizza Oven. Join for £10 and enjoy membership until your 26th birthday.

PATRONS – from £300

The support of our Patrons is invaluable. They are champions of our work and enjoy a closer relationship with the Open Air Theatre. With support starting from £300 a year, their contributions help us to stage bold and dynamic shows year after year. Benefits, in addition to those of Annual Membership, include complimentary tickets, a personal booking service, named acknowledgment and invites to Opening Nights



“THE OPEN AIR THEATRE HAS BEEN PART OF OUR FAMILY'S LIFE FOR A LONG TIME. WE ARE DELIGHTED TO BE PATRONS AND SUPPORT THE HUGE ARTISTIC AND CREATIVE EFFORT THAT GOES INTO EVERY PRODUCTION. EVERY PERSON INVOLVED ON STAGE, OFF STAGE AND IN ALL THE SUPPORT SERVICES IS TOTALLY COMMITTED TO EXCELLENCE. THE OPEN AIR THEATRE IS UNIQUE AND PRECIOUS.”
Olly & Jo Rogger

Nadine Higgin in *Legally Blonde*. Photo Pamela Raith

As a charity that receives no regular public subsidy, we generate the vast majority of our income from ticket sales. We are hugely grateful to all of our supporters for their generosity in giving to the theatre.

There are several ways you can support our work: by joining one of our membership schemes, sponsoring a seat, or making a one-off donation.

If you would like to discuss other ways in which you can make a difference at Regent's Park Open Air Theatre, please visit openairtheatre.com/support.

CORPORATE ENGAGEMENT

We forge partnerships that provide valuable, tangible benefits for our corporate supporters. Whether you want to create the most memorable event in your company calendar, or showcase your brand to a new audience, we will create a bespoke package that suits your needs.

SPONSOR A SEAT – £500

Sponsoring a seat at Regent's Park Open Air Theatre is the perfect way to honour a loved one, or celebrate treasured memories of enchanting evenings at the Park. Through making this gift, our Seat Sponsors receive: a personalised seat plaque with choice of inscription; a certificate denoting the name and location of your sponsored seat; two complimentary glasses of Canard-Duchêne champagne; and a named acknowledgment in our programme.

LEAVING A GIFT IN YOUR WILL

When writing a Will, we understand that family and loved ones come first. However, you may also be considering leaving a gift to a charity close to your heart, like the Open Air Theatre. Supporting the theatre in this personal way helps to support the future of this unique venue for generations to come and can be as simple as stating your wish to leave 1% of your estate to the theatre. If you're comfortable, we would love to speak to you further about this important decision and to thank you for considering giving in such a special way.



To find out more openairtheatre.com/support

Natasha May-Thomas and Jack Mitchell in *Carousel*. Photo Johan Persson

DELANCEY IS COMMITTED TO CREATING AND SUPPORTING GREAT PLACES: HOMES, SCHOOLS, WORK PLACES AND NEIGHBOURHOODS. WE ARE DELIGHTED TO SUPPORT REGENT'S PARK OPEN AIR THEATRE.



HERE EAST, LEADERS IN LEGACY



HEADLINE SPONSOR OF THE UK SCHOOLS' CHESS CHALLENGE



EAST VILLAGE, AWARD WINNING NEIGHBOURHOOD



GET LIVING, A NEW WAY OF RENTING



EARLS COURT A NEW DIRECTION, AND A NEW CHANCE OF GROWTH FOR THE AREA



CHARITY PARTNER TO SNOW-CAMP AND SPONSOR OF THEIR MENTAL HEALTH CAMPAIGN



SPONSOR OF THE NATIONAL PORTRAIT GALLERY'S SCHOOLS AND HOSPITALS PROGRAMMES

DELANCEY

DELANCEY. NOT A TYPICAL PROPERTY INVESTOR

Delancey · Lansdowne House · Berkeley Square · London W1J 6ER
Tel + 44 (0) 207 448 1448 · Fax +44 (0) 207 448 1449 · www.delancey.com



PASTAN

DELICIOUS PLANT-BASED PASTA.



LONDON | MANCHESTER | BRISTOL | BARCELONA

www.pastan.co @pastan.uk



LET YOUR
IMAGINATION
RUN WILD...



Disney
THE
LION KING

LYCEUM THEATRE, LONDON
thelionking.co.uk